




5 Bushell Gardens, Pott Row PE32 1FX

£390,000

 3  2  1

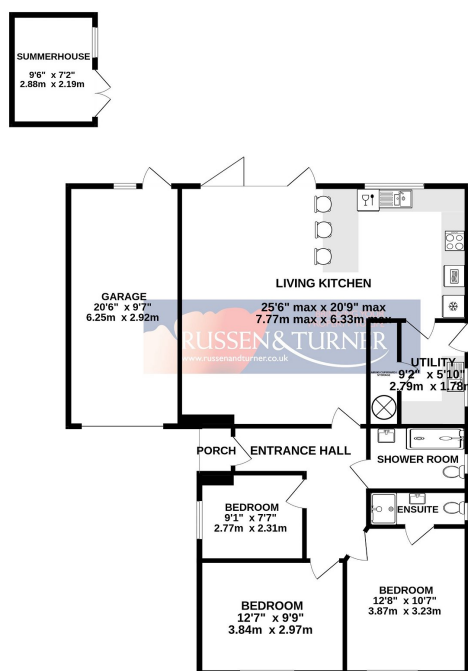


If you're looking for a bungalow that is ready to be moved into, then this beautifully presented home may just be the one for you. Available with no onward chain and built in 2020, this modern home offers open-plan living and is tucked away in a quiet cul-de-sac in the desirable village of Pott Row.

Key Features

- Detached bungalow
- 3 Bedrooms
- Ensuite
- Open-plan living
- Garage
- Ample parking
- Cul-de-sac
- No chain
- Built 2020
- Beautifully presented

GROUND FLOOR
1275 sq.ft. (118.4 sq.m.) approx.



TOTAL FLOOR AREA: 1275 sq.ft. (118.4 sq.m.) approx.
Whilst every attempt has been made to ensure the accuracy of the floorplan contained here, measurements of doors, windows, rooms and any other items are approximate and no responsibility is taken for any error, omission or mis-statement. This plan is for illustrative purposes only and should be used as such by any prospective purchaser. The services, systems and appliances shown have not been tested and no guarantee as to their operability or efficiency can be given.
Made with Metropix C2024

